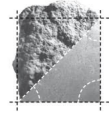
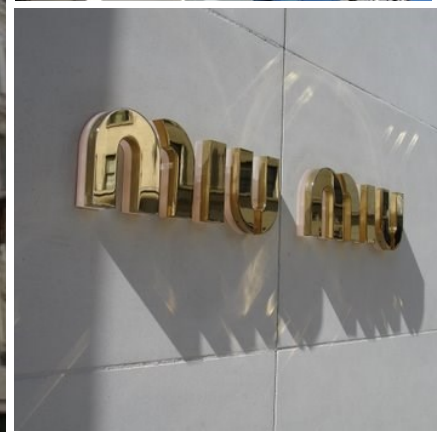
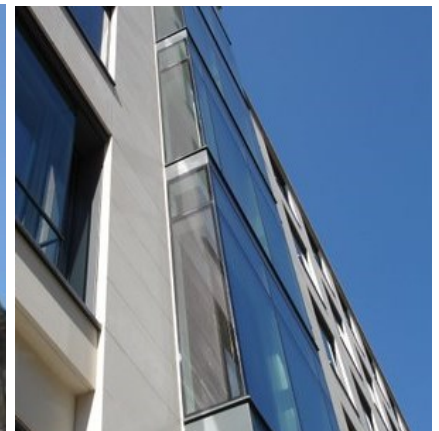


portland stone - naturally



ALBION STONE

150 New Bond Street, London W1



Architect/Designer:
Rolfe Judd

Client:
**Prudential Property
Investment Managers**

Main Contractor:
Skanska

Location:
Westminster, London

Portland Stone:
Bowers Basebed

Scope of Project:
**Development of multi-use
building with Portland stone
externals and internals.**

New Bond Street is one of London's most prestigious shopping districts and the lower level retail premises are currently occupied by the world renowned Italian fashion house of Prada.

Located within Westminster's Conservation Area in the heart of the Central London, this modern eight storey office and retail development was designed by Rolfe Judd for PRUPIM.

The scheme provides 17,500 sq ft of Cat A office space over the upper six storey's and 4,000 sq ft of prime retail space

to the ground and basement levels.

The stonework package included Portland Stone cladding externally and Portland Stone wall linings in the reception.

Internally the structure is unable to support the weight of 75mm thick Portland stone, so we sourced lightweight, honeycomb-backed, panels which were used for the internal soffits and fascias. To ensure safe installation of the panels, a running beam was erected to support the stones while they were maneuvered into position.

www.albionstone.com

t 01737 771772 e enquiries@albionstone.com

ALBION STONE