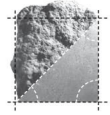
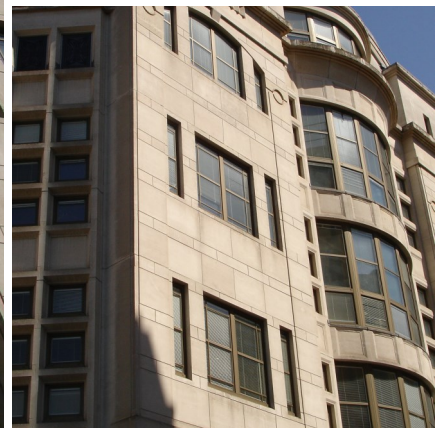


portland stone - naturally



ALBION STONE

# 12 Golden Square, London W1



**Architect/Designer:**  
**Frank Timothy Associates**

**Client:**  
**Taylor Clark**

**Main Contractor:**  
**Fitzroy Robinson Partnership**

**Location:**  
**Piccadilly, London**

**Portland Stone:**  
**Independent Whitbed**

**Scope of Project:**  
**Construction of new seven story Portland stone office block.**

The existing building on the site of 12 Golden Square was demolished to make way for the new seven storey office block, on the corner of Golden Square.

The new building was designed by Frank Timothy Associates with the specification including Portland Stone Cladding to be in keeping with existing buildings within the area.

Once an architect was appointed, Fitzroy Robinson, and Albion Stone entered into discussions with them to assist the selection of Portland Stone for cladding on the building.

Independent Whitbed was chosen by the Architects due to its durability and test results as well as its aesthetic characteristics.

APS Masonry, assisted the Architect with the selection of Stone and began some preliminary stone tests.

The cladding was fixed to steel framework, with wide and narrow bands of stone to add emphasis to the cladding. The site had restricted access due to the narrow location. Larger pieces of stone were hoisted into place in very confined spaces.

[www.albionstone.com](http://www.albionstone.com)

t 01737 771772 e [enquiries@albionstone.com](mailto:enquiries@albionstone.com)

