

ALBION STONE

portland stone - naturally



24 King William Street London EC4

Architect/Designer:
Ben Adams Architects

Client:
Beltane Asset Management

Main Contractor:
Volker Fitzpatrick

Stonework Contractor:
Prelude Stone

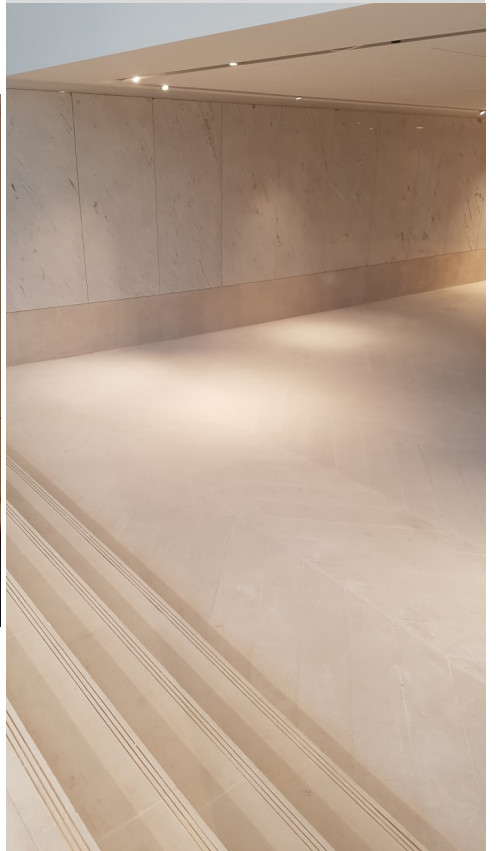
Completion Date:
2017

Portland Stone:
Jordans Whitbed

Scope of Project:
A new building using the structure of the previous building with a new Portland Stone interior.

The new mixed use building used the structure of the previous building, added two new floors, a new façade and a new Portland Stone interior.

The reception space comprises of a double height entrance hall with the interior of the reception finished with Portland stone floors and marble feature walls.



Albion Stone supplied 200m² 'Herringbone' tiles at 30mm thick in Jordans Whitbed as well as treads and risers.

The scheme achieved a BREEAM 'Very Good' rating.

www.albionstone.com

t 01737 771772 e enquiries@albionstone.com

ALBION STONE