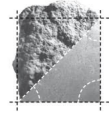
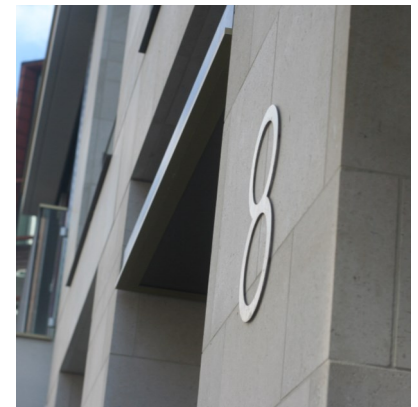


portland stone - naturally



ALBION STONE

8 Hanover Street, London W1



Architect/Designer:
Squire and Partners

Client:
City Offices London Ltd

Main Contractor:
Mace

Location:
Mayfair, London

Portland Stone:
Jordans Whitbed

Scope of Project:
Demolition and construction of new mixed-use Portland stone development.

Situated in the heart of Mayfair, on the boundary of Hanover Square, Hanover Street was originally the home of military tailoring in the 1800s.

The new scheme at numbers 8-10 has been designed by architects Squire and Partners to create a new luxury mixed-use development, touching on the history of the street.

The project design team chose to use Portland stone for the façade along with brass and timber detailing as

a contemporary reference to military colours and to match other buildings in the Mayfair Conservation Area.

The project team visited Albion Stone's site on Portland to view the production process and view the large range panels for the project. Here, the geological range of the stone was agreed.

Squire and Partners commented:

'The Jordans Whitbed Albion Stone cladding was chosen as a complementary material for walls and gives solidity to the clean, modern interior.'

www.albionstone.com

t 01737 771772 e enquiries@albionstone.com

ALBION STONE