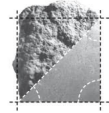
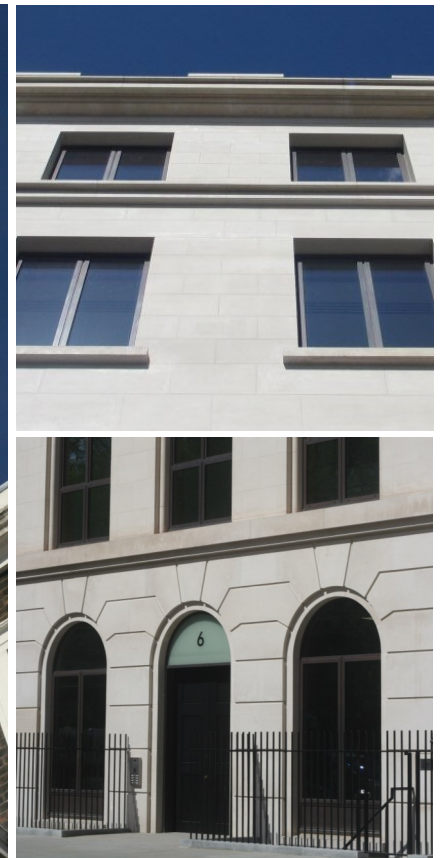


portland stone - naturally



ALBION STONE

5-6 St James's Square, London W1



Architect/Designer:
Dixon Jones and GMW

Client:
Rio Tinto

Main Contractor:
Sir Robert McAlpine

Location:
St James's Square, London

Portland Stone:
**Fancy Beach Whitbed and
Jordans Basebed**

Scope of Project:
**Demolition of building at No. 6
and retention of listed façade
at No. 5 for construction of
new mixed-use development.**

St James's Square has been one of the most fashionable addresses in London and home to company headquarters for years.

Mining company, Rio Tinto appointed Exemplar to redevelop the 1960's building at its former global headquarters: Nos. 5-6 St James's Square, following their move to new HQ in Paddington.

The development at No. 6 comprised of 115,000 sq ft of grade A office space, 13 prestigious residential units and a small art gallery, and at No. 5 15,000 sq ft of refurbished Grade II office accommodation and stonework restoration.

In the beginning stages of the project Albion Stone were approached for samples by GMW when the project was due to go into planning.

The planning authorities were very strict on the stone selected for the job - it had to be Portland stone in order for it to be sympathetic with the surrounding buildings.

However, the shellier stones which were approved in the initial design stages were then rejected later down the line by planners and the design team asked Albion to offer a cleaner stone.

www.albionstone.com

t 01737 771772 e enquiries@albionstone.com

ALBION STONE