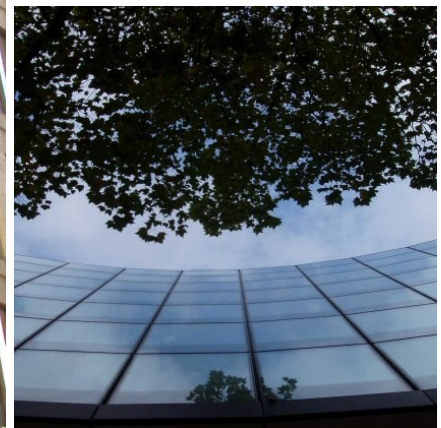
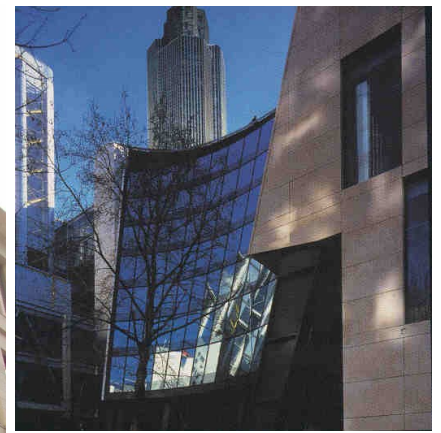


portland stone - naturally



ALBION STONE

100 Wood Street, London EC2



Architect/Designer:
Foster and Partners

Client:
Lloyds Banks and Helical Bar

Location:
City of London

Portland Stone:
Independent Basebed and Bowers Whitbed

Scope of Project:
Construction of multi-storey building with of Portland stone cladding on a rain screen system.

100 Wood Street is the first natural Portland Stone rainscreen cladding system approved by the Surveyors of the Corporation of London Planning & Surveying Department.

Albion Stone and Harrison Goldman entered into discussions with the Architect on the design of this very modern glass office block and the incorporation of large Portland Stone panels. The resulting revolutionary fixing system was the first rainscreen cladding of its kind.

A number of different Portland beds were considered by the Architect, however, not all were able to produce stone panels of the required size therefore Bowers Whitbed was selected.

Albion Stone set up two dedicated production lines to manufacture the stone panels for this project.

Shortly after the project started His Royal Highness Prince Philip viewed the production lines and discussed the work showing considerable interest in the innovative design.

Albion Stone prepared large panels of Independent Basebed at their factory which were used for internal wall linings and also supplied 600m² of Independent Basebed internal Cladding at 75mm.

The total amount of stone used on the project was over 200m³ supplied over a 9 month period from the Spring of 1999 to early 2000.

www.albionstone.com

t 01737 771772 e enquiries@albionstone.com

ALBION STONE