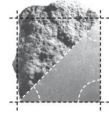
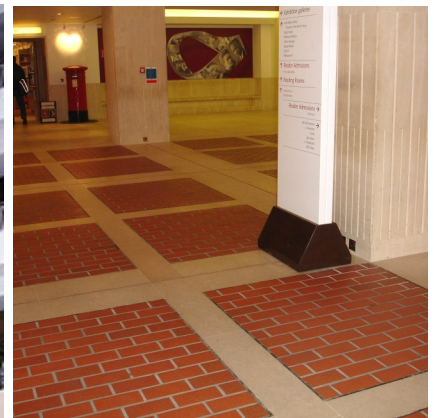


portland stone - naturally



ALBION STONE

# British Library, London NW1



**Architect/Designer:**  
**Colin St John and Partners**

**Client:**  
**Department of National Heritage**

**Main Contractor:**  
**Davis Langdon Everest**

**Location:**  
**Euston, London**

**Portland Stone:**  
**Independent Whitbed**

**Scope of Project:**  
**Installation of new internals with a long design life.**

The British Library was designed by Architect Colin St John Wilson and opened in November 1997 by Her Majesty the Queen. The project took 21 years to complete from Planning Stages through to its opening at a cost approximately £511,000,000.

The Library covers 108,000m<sup>2</sup> divided over two floors with four huge basement rooms storing books in a stable humidity on over 340km of shelving.

The architects specified a Limestone with a long design life for the internals of the British Library. The material selected had to be safe in use, bright in colour and available for future restoration projects or additions.

Independent Whitbed was chosen as the best stone. FW Bull visited Albion's Quarry and selected blocks to be used on the Project.

Albion Stone manufactured treads and risers, straight ashlar panels and circular ashlar panels, internal paving and skirting, external paving, copings, gully stones and quoins.

Albion Stone also donated the stone used for the plaque for Queen's opening.

**This project was shortlisted for the Stirling Prize in 1998.**

[www.albionstone.com](http://www.albionstone.com)

t 01737 771772 e [enquiries@albionstone.com](mailto:enquiries@albionstone.com)

