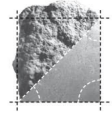
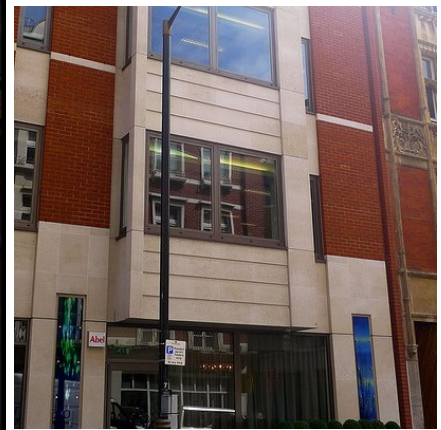


portland stone - naturally



ALBION STONE

25 Maddox Street, London W1



Architect/Designer:
Hunter Evans

Client:
**Morley Property
Developments**

Main Contractor:
Mowlem

Location:
Piccadilly, London

Portland Stone:
Various beds

Scope of Project:
**Construction of new multi-
use building.**

The project at Maddox Street, consisted of the demolition of the original Georgian building and construction of a new building which included space for retail outlets, a restaurant, commercial offices and residential units.

The four Portland Stone bays recall the original Georgian rhythm. It was important that the overall mass of the buildings should not read as a monolith.

This was achieved by varying the proportions, height, and details of each bay.

Albion Stone supplied 25m³ of Portland Independent Whitbed for a variety of applications, including quoins, ashlar panels, fascias and copings.

The total stone package value was just over £67,000.

www.albionstone.com

t 01737 771772 e enquiries@albionstone.com

ALBION STONE