

ALBION STONE

portland stone - naturally



**Dorchester Hotel, 45  
Park Lane  
London W1**

**Architect/Designer:**  
Paul Davis & Partners and  
Thierry W Despont

**Client:**  
Dorchester Collection

**Main Contractor:**  
Kier Wallis

**Stone Fixing Contractor:**  
Szerelmey

**Completion Date:**  
2012

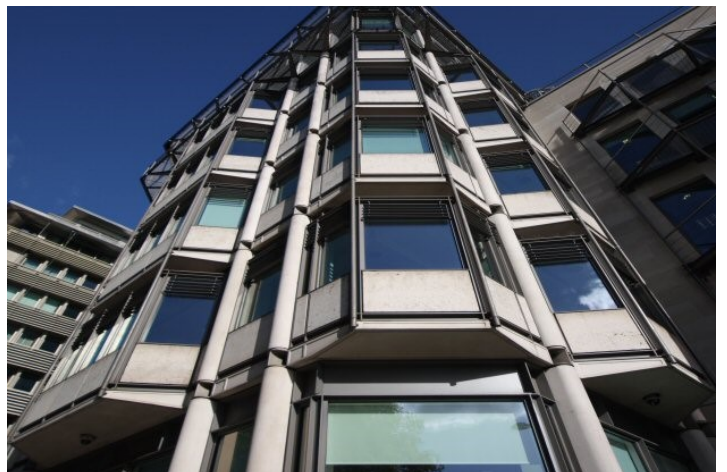
**Portland Stone:**  
Jordans Basebed

**Scope of Project:**  
Cleaning and restoration of  
external façade, and  
construction of new  
accommodation wing.

Szerelmey undertook the external cleaning and restoration contract worth £470,000. Szerelmey cleaned and restored the existing façades.

Portland Jordans Basebed stone and Metsec backing walls were used to remodel the ground floor columns and to extend the new façades up to the 9th floor.

Albion Stone provided approximately 70m<sup>3</sup> of Portland Jordans Basebed for the project.



[www.albionstone.com](http://www.albionstone.com)

t 01737 771772 e [enquiries@albionstone.com](mailto:enquiries@albionstone.com)

ALBION STONE