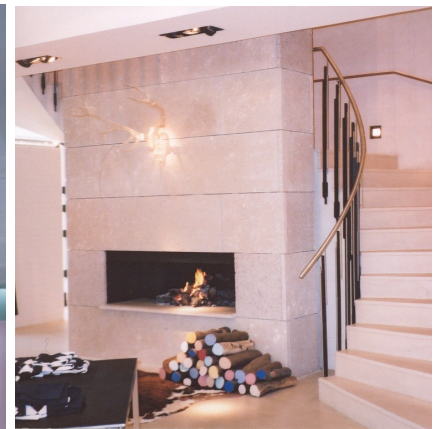


portland stone - naturally



ALBION STONE

## Pringle, London W1



**Architect/Designer:**  
**Wells Mackereth**

**Client:**  
**Pringle of Scotland**

**Main Contractor:**  
**PC Shopfitting**

**Location:**  
**Sloane Square, London**

**Portland Stone:**  
**Admiralty Roach and  
Bowers Basebed**

**Scope of Project:**  
**Refit of store internals.**

This project comprised the total re-fit of the existing premises and the opening of the first Pringle Shop in London in line with Pringles programme to open retail outlets.

The specification for the fitting of the new Pringle Store was to create the right ambience with the right products to enhance the retail space and to display the merchandise in a contemporary manner.

Natural Portland Limestone was chosen, with the shellier Roach stone being selected to create distinctive display features and shelving. Albion Stone supplied Admiralty Roach slabs for the internal wall linings, shelving,

fireplace and display features.

Bowers Basebed was selected for the flooring and the treads and risers providing a clean contrast to the shellier Roach Stone, whilst remaining in the same classic colour palette.

The store was opened in the late summer of 2002. Andrew Lowe the Architect commented that he was very impressed with the stone on the finished project and very pleased with the overall result.

Another Pringle Store that features Albion Stone's Portland Roach is located at the branch's Tokyo Store in Japan.

[www.albionstone.com](http://www.albionstone.com)

t 01737 771772 e [enquiries@albionstone.com](mailto:enquiries@albionstone.com)

ALBION STONE