

ALBION STONE

portland stone - naturally



House of Fraser Cabot Circus, Bristol

Architect/Designer:
Stanton Williams

Client:
Bristol Alliance and Land
Securities

Main Contractor:
Sir Robert McAlpine

Completion Date:
2008

Portland Stone:
Bowers Roach & Bowers Whitbed

Scope of Project:
Redevelopment of the
department store in line with the
Cabot Circus development

Architects Stanton Williams created a landmark building for the Bristol Alliance's £500m Cabot Circus development.

Bristol's House of Fraser department store sought to integrate with the city. Artist Susanna Heron, in collaboration with Stanton Williams Architects, helped to design the facade.

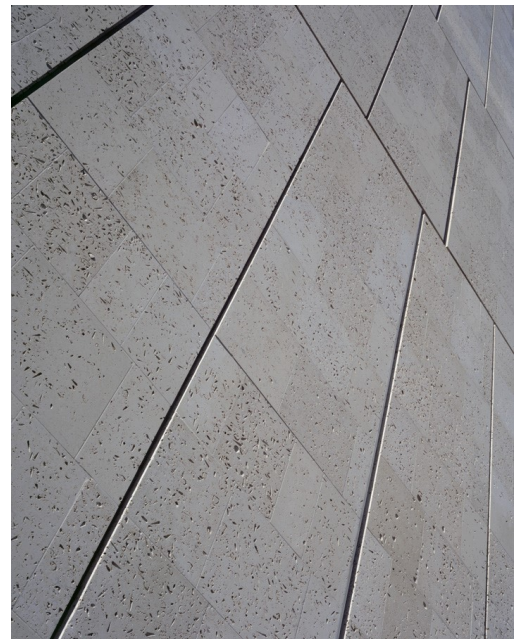
Portland Bowers Roach was specified for the main elevation and once she was sure the grid of the building was set, she began work on the design, which took a year to complete.



Albion Stone supplied stone faced panels of Portland Bowers Roach and Portland Bowers Whitbed. In total, Techrete produced the Architectural Cladding in 730 panels.

At the principal corner of the building, smoother Whitbed stone from the same quarry was used, contrasting with the Roach.

Cabot Circus was officially opened in September 2008.



In 2009, the project gained a RIBA award.

The project also got 'Commended' at the Natural Stone Awards 2010 in the 'New Build Modern Style' Stone Cladding' category.

www.albionstone.com

t 01737 771772 e enquiries@albionstone.com

ALBION STONE