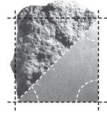
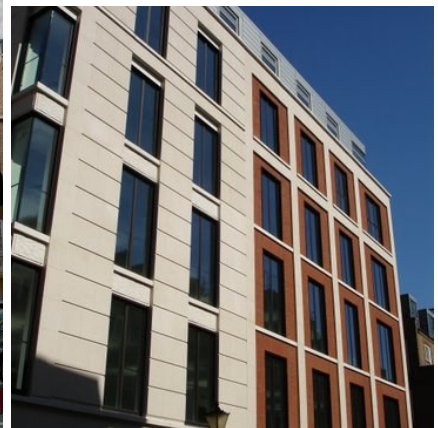


portland stone - naturally



ALBION STONE

99 Jermyn Street, London SW1



Architect/Designer:
Frederick Gibberd Architects

Client:
IVG

Main Contractor:
John Sisk

Location:
Jermyn Street, London

Portland Stone:
Jordans Basebed

Scope of Project:
Construction of five-storey office building with ground floor retail space.

This project involved the redevelopment of an existing office building on a prominent corner of Jermyn Street, SW1 in the heart of the St James's conservation area.

The 26,000 sq ft building is arranged over six floors and provides retail and office space on the lower floors with residential accommodation on the upper levels to allow for stunning views over the surrounding area.

Portland stone was

specified to the project as the architects wanted to match the stone on the original building. Both Albion's Jordans Whitbed and Basebed samples were approved by the project team but Jordans Basebed was chosen for its clean and uniformed appearance.

Albion Stone provided 22m³ of Portland Jordans Basebed for the external façade.

www.albionstone.com

t 01737 771772 e enquiries@albionstone.com

ALBION STONE