



ALBION STONE

portland stone - naturally



1 & 2 New Ludgate London EC4

Architect/Designer:
Fletcher Priest Sauerbrush, Hutton,
Gustafson Porter

Client:
Land Securities

Main Contractor:
Skanska

Stonework Contractor:
Putney & Wood

Completion Date:
2015

Portland Stone:
Jordans Basebed

Scope of Project:
Internal wall linings 85m³

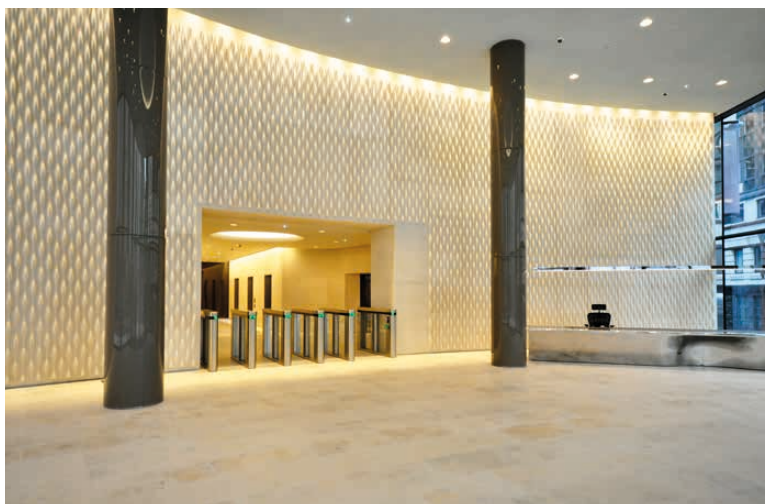
City of London Building of the Year 2016

Situated between Ludgate Circus and St Pauls, this £260 million new build forms a new focal point. With the neighbouring buildings in mind, our Jordans Basebed was selected for the internal wall linings due to its characteristics.

The canvas of stone in a contemporary, bold, geo-metric pattern is used cleverly as a feature wall and ensures emphasis is put on the vast amount of space that travels through New Ludgate's large glazed double-height entrance into the street.

The process involved Putney & Wood's in-house designers using CAD to detail every stone before creating a visual representation of each elevation.

The manufacture was split between 3D Pierre, stoneCIRCLE and Albion Stone.



www.albionstone.com

01737 771772 enquiries@albionstone.com

ALBION STONE