

ALBION STONE

portland stone - naturally



Chanel
London W1

Architect/Designer:
MacDonald Architects

Client:
Chanel

Main Contractor:
Miller Druck
International Stone Ltd

Completion Date:
2013

Portland Stone:
Jordans Basebed

Scope of Project:
New flagship boutique
with office space above

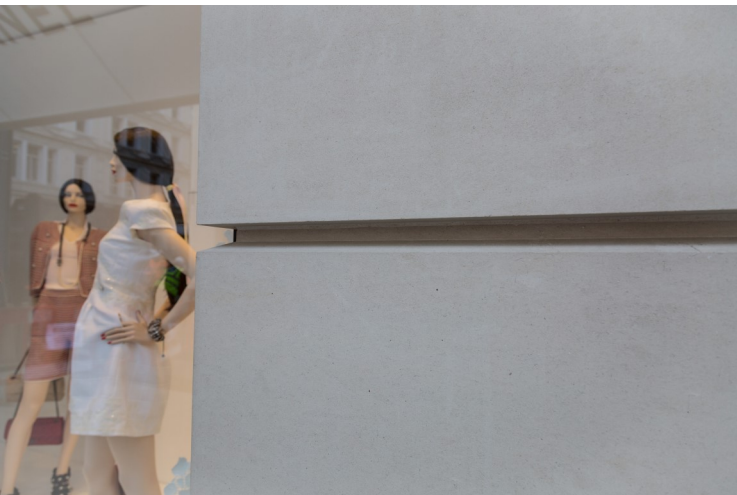
Situated in the heart of London's West End, New Bond Street is home to many of the world's iconic fashion houses.

Prestigious French brand Chanel originally moved to New Bond Street back in 2010, holding only 10,000 square feet of retail space.

Doubling their retail space, Chanel commissioned Macdonald Architects to design their new Flagship boutique at 158-159 New Bond Street.

Miller Druck, approached Albion Stone looking for a 'flawless' material for the externals of the Chanel Store.

Albion Stone offered their Jordans Basebed stone due to its historical context around Mayfair.



www.albionstone.com

t 01737 771772 e enquiries@albionstone.com

ALBION STONE