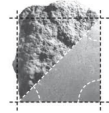
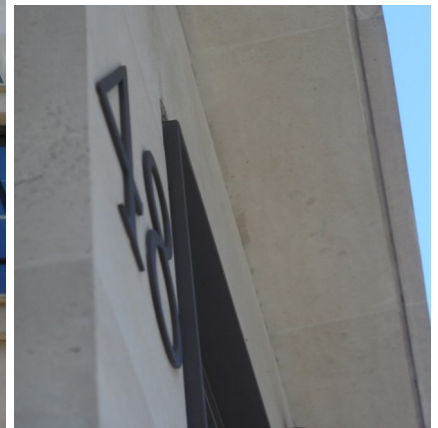
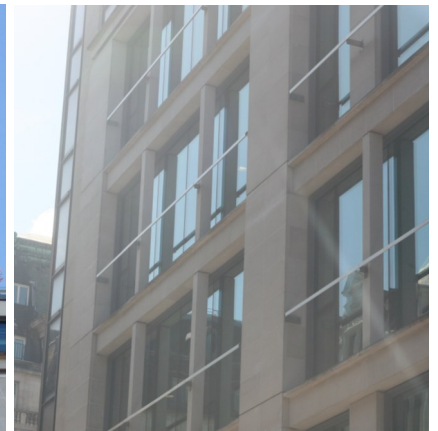


portland stone - naturally



ALBION STONE

# 48 Dover Street, London W1



Architect/Designer:  
**Squire and Partners**

Client:  
**Royal London Asset Management**

Main Contractor:  
**Galliford Try**

Location:  
**Mayfair, London**

Portland Stone:  
**Jordans Whitbed**

Scope of Project:  
**Construction of seven-storey commercial development with front Portland stone façade and rear glass elevation.**

48 Dover Street is a new prestigious development situated in the heart of Mayfair.

Famous for its Georgian architecture, historic hotels, bars and art galleries, Royal London Asset Management appointed Squire and Partners to convert the existing 1960s building, into a new multi-use building providing modern retail, commercial and residential space.

Squires and Partners designed the site so that it fulfilled stringent planning requirements and integrated

into the Listed streetscape.

The front façade was specified in Albion Stone's Portland Jordans Whitbed, whilst the rear elevation was stepped back through a series of terraces completed with a curved glass roof.

**Albion Stone provided approximately 400m<sup>2</sup> of Jordans Whitbed for the project.**

[www.albionstone.com](http://www.albionstone.com)

t 01737 771772 e [enquiries@albionstone.com](mailto:enquiries@albionstone.com)

ALBION STONE